

# EUROPEAN PIPELINE CENTER (EPC)

The EPC, founded in 2005 and managed by MTA Messtechnik GmbH, is a test, training and research center for the European Water Management.



More than 2,500m of pipes of all common materials buried or laid above ground provide a very practice-oriented training and test facilities for professionals.



Events | Trainings | Tests | Research



[www.mta-messtechnik.at](http://www.mta-messtechnik.at)



[www.pipe-inspector.com](http://www.pipe-inspector.com)



[www.europeanpipelinecenter.eu](http://www.europeanpipelinecenter.eu)

MTA Messtechnik GmbH  
Handelsstraße 14-16  
9300 St. Veit/Glan/Austria  
[office@mta-messtechnik.at](mailto:office@mta-messtechnik.at)  
[www.mta-messtechnik.at](http://www.mta-messtechnik.at)

Legal status  
Ltd. Liability Company acc. Austrian law  
Registration  
Firmenbuch Klagenfurt/Austria FN226770k  
Founded 2002



world wide water



# MTA MESSTECHNIK

## SERVICE AND PRODUCTS

for Potable Water, Wastewater, Hydropower and Industrial Applications

We have a long tradition of successful partnership with the water and wastewater industry in offering products, services and equipment.

We are focused on developing specialized solutions seeing ourselves as a technology leader for special problems in the water supply and sewage disposal.

### MTA Messtechnik GmbH Awards & Certificates



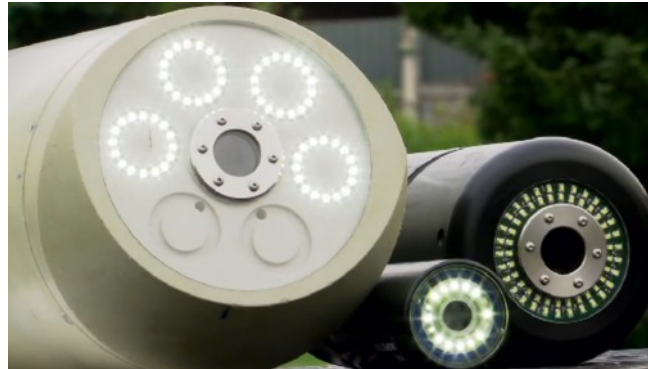
## PORTFOLIO

- Cable-less pipe inspection
- Leak detection
- Water loss analysis
- Detection of non-metallic pipelines
- Remote monitoring systems
- Measuring instruments
- Measurement trailers

# SPECIAL PROGRAM

## MTA PIPE-INSPECTOR®

Cable-less video inspection of pipelines with integrated leak detection during operation. For potable water, wastewater, industrial and hydropower applications.



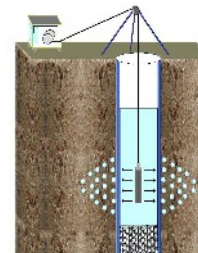
## WCS - WATER CONTROL SYSTEMS®

Modular remote monitoring system for water supply systems, sewage, wastewater treatment plants, district heating plants and the environmental industry recording dynamical values and static state inquiries.



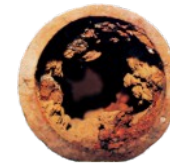
## MTA AIR-JETTING

Well cleaning and regeneration working with cooled, oil-free air in breathing air quality without use of any chemical agent, removing iron, manganese, humus, sludge, sand, ochreous, sinter and other deposits.



## MTA AIR-WATER-JETTING LW87

The MTA Air-Water-Jetting LW87 procedure is a very reliable and effective method to clean water pipes without outside intervention (digging, cutting). From 1/2" up to DN 1400.



# MTA MEASUREMENT TRAILERS

## CONSTRUCTION AND SERVICE

- **PIPELINE CLEANING**  
Air-water-mixing device  
Control system  
From DN 1/2" up to DN 1400
- **WELL REGENERATION**  
MTA AIR JETTING STANDARD  
Up to 300bar | for well pipes |  
Up to 250m



Project - Essbio, Chile

MTA AIR JETTING SOFT  
Up to 50bar | for PVC, concrete  
and clay pipes | up to 250m

MTA AIR WATER JETTING  
Up to 150bar | for non-aquiferous pipes |  
Up to 250m

- **MOBILE WATER TREATMENT**  
10m³/h up to 100m³/h  
Modular Construction

